

## Bungalow Styles

There are numerous bungalow styles or “sub-types,” many of which can be found throughout Elgin’s older neighborhoods. The most likely areas to find good bungalows are in the National Watch Historic District, the Northeast Neighborhood and the Southwest Neighborhood.

- Arts & Crafts
- Chicago
- Vernacular
- Swiss Chalet
- Spanish Revival

The Elgin Area Historical Society and Neighborhood Housing Services of the Fox Valley are leading an initiative to promote and restore historic bungalows in Elgin.

**Please support the preservation of historic Elgin bungalows. Contact the Historical Society today for more information.**

Elgin Area Historical Society

360 Park St.

Elgin, IL 60120

Phone: 847-742-4248

Fax: 847-931-6199

Email: [elginhistory@foxvalley.net](mailto:elginhistory@foxvalley.net)  
[elginhistory.org](http://elginhistory.org)

Published by the Elgin Area Historical Society through the Cornerstones for Community Program, an initiative of NHS of the Fox Valley and Landmarks Illinois and supported by the Richard H. Driehaus Foundation.



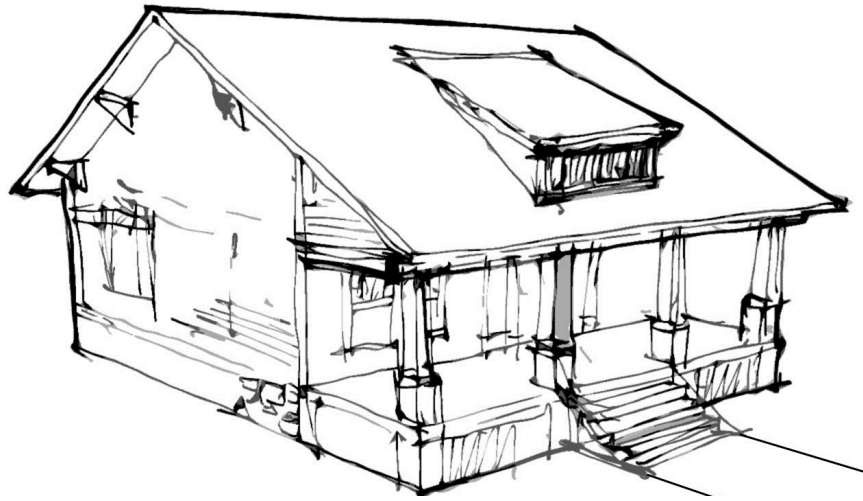
# Do You Live in a Bungalow?

*Bungalows represent a unique transitional period in American architectural history, one that should be appreciated, celebrated, and protected.*

*The City of Elgin, Illinois has a rich stock of historic bungalows built between the 1910s and 1930s.*

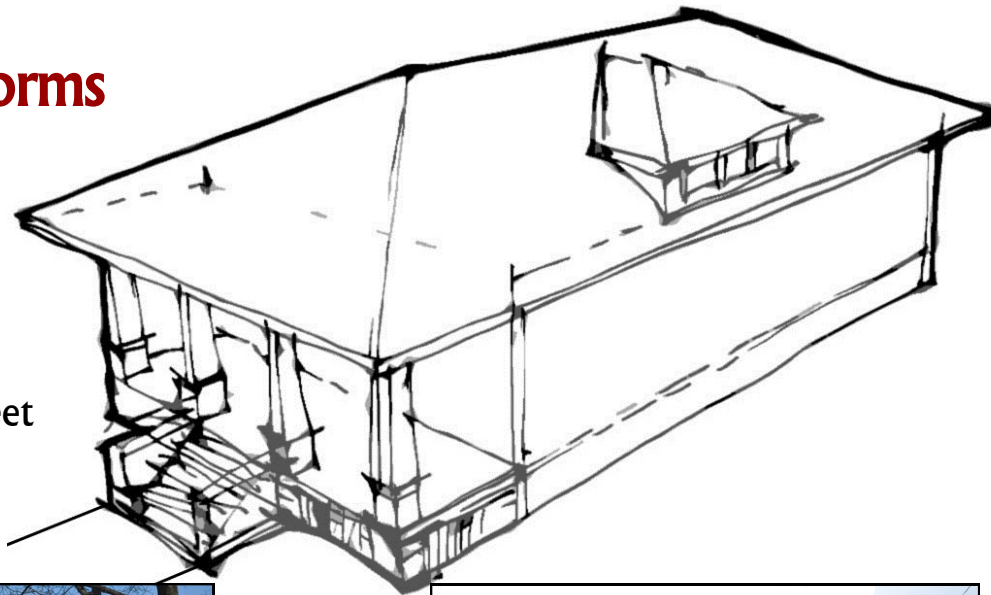
*These simple and classic homes contribute to the rich architectural history of Elgin’s neighborhoods.*





Long Side  
Facing Street

## Bungalow Forms



Short Side  
Facing Street



## Bungalow Characteristics

The following are various exterior elements that help to distinguish bungalow designs. While these are common, they are by no means found on all bungalows.

1. 1 to 1 1/2 story residence
2. Low sloped roof
3. Simple rectangular shape
4. Overhanging eaves
5. Exposed rafter tails, often cut out; eave brackets
6. Second story dormers
7. Front porch— full or half; open or enclosed
8. Elevated first floor
9. Exposed chimney
10. Double hung, cottage style windows
11. Square or tapered (battered) columns
12. Cedar shingles, clapboard, stucco, or brick exterior walls
13. Natural colored exterior – earth tones & pastels, natural finish of materials

