

27TH ANNUAL

Cemetery Walk

AT BLUFF CITY CEMETERY

LIVING HISTORY



PRODUCED BY
ELGIN HISTORY MUSEUM

Sunday, September 28, 2014

11:00 A.M. — 3:00 P.M.
945 BLUFF CITY BLVD. — ELGIN, ILLINOIS

360 PARK STREET • ELGIN, ILLINOIS 60120 • PHONE: 847.742.4248 • FAX: 847.931.6199
EMAIL: ELGINHISTORYMUSEUM@ELGINHISTORY.ORG • WWW.ELGINHISTORY.ORG



Associated Bank



A Brief History

When the old Elgin Cemetery on Channing Street began to reach capacity, the city of Elgin bought land at its southeast corner for a municipal cemetery. The Gifford family and the Whitcomb family at one time owned the land. Bluff City was opened in 1889 and graves from the Channing Street location were gradually moved to the new site. While their final resting place may be Bluff City Cemetery, those who died before 1889 had a temporary resting place elsewhere. If you see a grave marker with the date of death prior to 1889 you can be assured that it was moved here from the Channing Cemetery. Even though Bluff City was opened in 1889, internments continued at Channing until the final burial took place there in 1906.

Bluff City Cemetery consists of 107.8 acres of land. Albert Marckhoff, one of the five Marckhoff brothers, was the only one not to follow in the family tradition of brick- or stonemason. Albert was the first sextant, or supervisor, of the cemetery, and laid out the first 12 sections.



Cast

Jane Peterson — Linda Rock

Vignette — Sara Ellen Anderson and Sue Moylan

Lydia Keyes Becker — Bonnie Conte

Jonathan Force — Mike Delehoy

August Scheele — August Conte

Caroline Chamberlain — Beth Hudson

Vignette — Jim Anderson and Jim Turner

Emil Barth — James Carrigan

Vignette — Marge Edwards, Carrie Edwards and Lisa Eby

GUIDES FOR 2014 CEMETERY WALK

Alisa Corsi

Paul Larson

Sanita Saengvilay

Babette Colburn

John Marston

Barbara Schloss

Andrew Cuming

Monta Nelson

Pam Thompson

Jana Frohlich

Leslie Robinson

Doug Tomsha

Tricia Grosser

Marge Rowe

Andy Walters

Pam Huske

Sara Russell

CEMETERY WALK COMMITTEE 2014

Laura & Steve Stroud — Co-Chairs

Anne LoCascio — Graphic Design

Laura & Steve Stroud, Marge Rowe and Jana Frohlich —
Route Planners

Elizabeth Marston — Sponsorships & Media

Steve Stroud — Cemetery Walk Website

John Fleener — Videographer

George Rowe, John Wiedmeyer and Mark Preradovic —
Chair set-up and Removal

PAST CHAIRPERSONS

Jerry Turnquist — 1988-1993

Rebecca Minetti — 1994-2000

Linda Rock & Marge Rowe — 2001-2007

Laura & Steve Stroud — 2008 - Present

Jane Peterson

1876 – 1965

PORTRAYED BY LINDA ROCK

Jane Peterson was born and raised in Elgin and graduated from Elgin High School in 1894. She attended the 1893 Columbian Exposition in Chicago where she learned of the Pratt Institute, a new technical school, where she would study art. Her work is well known in the art world and her paintings are on display in art museums throughout the United States.



Jonathan Force

1819 – 1888

PORTRAYED BY MIKE DELEHOY

Jonathan Force came to the Elgin area in 1843 and worked as a mechanic and carpenter. He later bought a large tract of land on the East side of Elgin where he produced fruits for the people of the town. He later sub-divided this land and sold building lots. He didn't believe in banks, so he always collected his money in gold coin.



August Scheele

1859 – 1940

PORTRAYED BY AUGUST CONTE

August Scheele came to Elgin from Germany in 1873. He went on to establish what was one of the most modern grocery stores of its time. His store set the standard for quality and cleanliness. It opened in 1899 and was known for excellent customer service. At one time, he had 16 delivery wagons in his employ. Two of his homes are located in the the 800 block of Douglas Avenue.



Caroline Chamberlain

1828 – 1907

PORTRAYED BY BETH HUDSON

Caroline came from Belfast, Maine after the death of her husband. She came to live here with her married daughter, Celestia, the wife of Daniel J. Chamberlain. She was an educated person and she traveled the world. She was a charter member of the Elgin Travel Class, which still exists today.



Emil Barth

1897 – 1928

PORTRAYED BY JAMES CARRIGAN

Emil Barth was born and raised in Elgin. He served two years in the US Army during World War I, then returned to Elgin. He joined the Elgin Fire Department in 1927 and served as a pipeman out of Fire Barn 1. Emil died in the line of duty while answering a call on Orange Street.



Lydia Keys Becker

1834 – 1909

PORTRAYED BY BONNIE CONTE

Lydia Keys was born in Jamestown, New York and arrived in Elgin with her parents in 1850. She returned to New York to help organize a teacher's college. While in New York she married John Becker and returned to Elgin once again. She taught history and literature at The Elgin Academy for eighteen years and wrote a history of the Academy for its Golden Jubilee.



VIGNETTE ONE

White Bronze Monuments

JIM ANDERSON AND
JIM TURNER



VIGNETTE TWO

Victorian Funeral Hymns

MARGE EDWARDS, CARRIE EDWARDS AND LIZA EBY

VIGNETTE THREE

THE Children's Section

SARA ELLEN ANDERSON AND SUE MOYLAN

27TH ANNUAL CEMETERY WALK SEPTEMBER 28, 2014

LOCATIONS

- | | |
|-------------------------|----------------------------|
| 1. JANE PETERSON | VIGNETTE 1. WHITE BRONZE |
| 2. EMIL BARTH | VIGNETTE 2. INFANT SECTION |
| 3. CAROLINE CHAMBERLAIN | VIGNETTE 3. FUNERAL HYMNS |
| 4. AUGUST SCHEELE | |
| 5. JONATHAN FORCE | |
| 6. LYDIA KEYS BECKER | |





Thanks to

Elizabeth Marston — Director, Elgin History Museum
Rick Ellis — Supervisor, Bluff City Cemetery
Kathy Zark — Office Manager, Bluff City Cemetery
Bluff City Cemetery Staff
First United Methodist Church — Loan of chairs
Laura Stroud — Guide coordinator
John Marston, Doug Tomsha — Guide Captains
Steve & Laura Stroud — Route Developers
Marge Rowe, Jana Frohlich — Route information
Al Walters, Steve Stroud — Group coordinators
Anne LoCascio — Graphic design
George Rowe, John Wiedmeyer, Al Walters, John Marston, Doug Tomsha and
Mark Preradovic, Jeff Grosser — Chair set-up and removal
Jerry Roller — Parking and traffic control
Barry Danielson — Pedestrian traffic
Katie Narayan, Rick Grimm, Kylee Dettmann — Greeters
Carolyn Roller, Miriam Lytle, Jeri Barnhart, Jodi Perkins, Kathy Walters,
Mira Wojciechowska — Registration
David & Dolores Nelson — Museum store
Ricky Harris, Holly Wiedmeyer — Refreshments & Popcorn Concession
Maurice Dyer — Transportation of equipment
Students from Elgin High School
Jeff Morello — Music
Judy Van Dusen — Still Photography
Aubrey Neville — Golf Carts
Bernice Ferraro, Sue Brown — Fantasy Festival Costume-Magic Centre
Klein's Farm & Garden Market
Wiener Ville III
Jeff Turner — In The Neighborhood Deli & Café, Elgin, Illinois
Martina Preradovic — Pastry Chef

**SPECIAL THANK YOU TO ALL THE ACTORS,
VIGNETTE SPEAKERS AND GUIDES**



Cemetery Walk Sponsors

Event Sponsor:

Associated Bank

Benefactor:

Dan and Karen Fox

Laird Funeral Home and Wait Ross Allanson Funeral Home

Madison Funeral Home

O'Connor-Leetz Funeral Home

Roxworthy Enterprises

Sponsor:

City of Elgin

EFS Foundation

Elgin Granite Works

Donor:

Gilded-Lily Historical Finishes

Elgin Public House

Contributor:

Ralph Helm, Inc.

State Street Market

Thanks to all of the Cemetery Walk sponsors!



1695 Larkin Avenue
Elgin, Illinois 60123
Phone: (847) 289-0513

E-mail us at: efsfoundation@efsfoundation.org

ELGIN HISTORY MUSEUM BENEFIT MR. AND MRS. LINCOLN



**SATURDAY, NOVEMBER 8, 2014
6 P.M.**

Heritage Ballroom in the Centre of Elgin
100 Symphony Way, Elgin, IL
\$40 Members/\$50 Non-Members



The 2014 Elgin Area Historical Society Benefit will feature Max and Donna Daniels as Abraham and Mary Lincoln discussing their lives before and during the Civil War.

The Daniels' have been performing as the Lincolns since 1988, researching and writing their own original scripts.

Appetizer refreshments, silent auction and cash bar at the Heritage Ballroom.

Bluff Spring Fen Nature Preserve

Bluff Spring Fen is an Illinois Nature Preserve. It is nearly 100 acres in size, with Poplar Creek forming its west boundary. Its rolling terrain includes six distinct plant communities; savanna, medic prairie, dry hill prairie, sedge meadow, marsh and the wetland fens for which it gets its name. Each community has its own set of plants and its own beauty.

There are 15 endangered species there, and many other rare and threatened species. Almost 100 different bird species visit the site each year, with over 35 of them staying to nest on the site. More than 55 different butterflies and over 20 dragonflies and damselflies have been counted. Frogs, turtles, snakes and salamanders live in the fen as well. Deer, raccoons, woodchucks, mice, voles, squirrels, and other mammals live there too, although the increase in the coyote population in the area has thinned out the woodchucks quite a bit.

A walking trail runs through the main part of the preserve and is open to the public every day of the year.

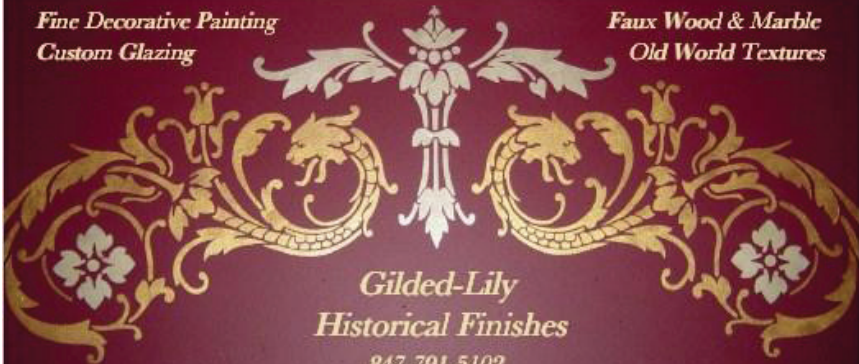
Friends of the Bluff Spring Fen



RESTAURANT & PUB
219 E. Chicago St. Elgin, IL
847-468-8810

*Fine Decorative Painting
Custom Glazing*

*Faux Wood & Marble
Old World Textures*



*Gilded-Lily
Historical Finishes*

847-791-5102

Gilded-Lily@wowway.com <http://Gildedlily.Shutterfly.com>



Laird Funeral Home P. C.

“Family Owned and Operated”

310 S. State Street, Elgin, Illinois 60123 (847) 741-8800

120 S. Third Street, West Dundee, Illinois 60118 (847) 836-8770

-- www.lairdfamilyfuneralservices.com --

Donald Laird Stephen Laird Robert Laird Patricia Laird
Corey Short

Wait Ross Allanson

*Funeral and Cremation Services,
Inc.*

Servicios de Cremacion y Funeraria

51 Center Street, Elgin, Illinois 60120 (847) 742-2100

201 South Main Street, Algonquin, Illinois 60102 (847) 658-4232

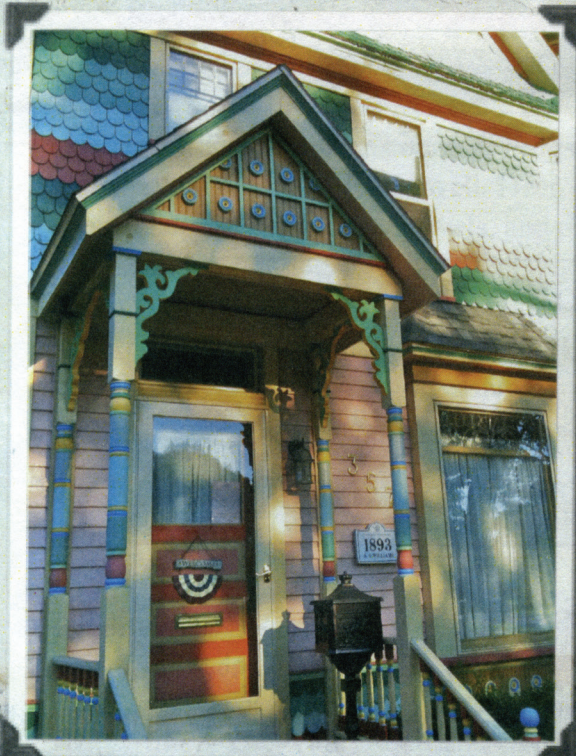
Dennis Roxworthy

ROXWORTHY

enterprises

(847) 622-8534

**Chad Roxworthy Painting
(847) 544-1164**



**Restoring
the PAST...**

**Preserving
the CHARM**

Roxworthy@SBCglobal.net

364 DIVISION

ROMANESQUE
REVIVAL
BUILT 1887



Serving the Fox Valley since 1940
O'CONNOR-LEETZ
FUNERAL HOME

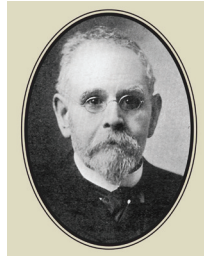
Providing families of all faiths with full service planning,
traditional services & cremation.

364 Division St., Elgin
(847) 741-1400
Located in the Historic District

Madison Funeral Home

305 Park Street Elgin, IL 60120

847-741-1128



David Barclay's Home, circa 1920s



Schmidt Funeral Home, circa 1950s



Part of the Elgin community for more than 90 years,
our building has changed over time, but not our
commitment to excellence.

Proudly family and veteran-owned.

www.madisonfuneralhomeelgin.com

