

26TH ANNUAL

# CEMETERY WALK



AT BLUFF CITY CEMETERY

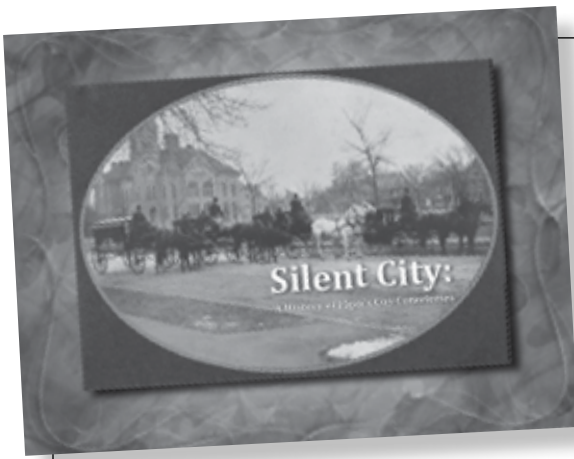
☙  
SUNDAY, SEPTEMBER 22, 2013

11:00 A.M. - 3:00 P.M.



*"living history"*

PRODUCED BY  
ELGIN HISTORY MUSEUM



## **NOW ON SALE**

A fascinating  
history of Elgin's  
City Cemeteries.

**Includes a photo-filled synopsis of all  
25 Cemetery Walks from 1988 to 2012**

Elgin History Museum  
360 Park Street  
Elgin, IL

Ziegler's ACE Hardware  
215 N. Spring Street &  
1158 Lillian Street  
Elgin, IL



**PROUD SPONSOR OF  
THE 26TH ANNUAL  
HISTORIC CEMETERY WALK**



## A BRIEF HISTORY

---

When the old Elgin Cemetery on Channing Street began to reach capacity, the city of Elgin bought land at its southeast corner for a municipal cemetery. The Gifford family and the Whitcomb family at one time owned the land. Bluff City was opened in 1880 and graves from the Channing Street location were gradually moved to the new site. While their final resting place may be Bluff City Cemetery, those who died before 1880 had a temporary resting place elsewhere. If you see a grave marker with the date of death prior to 1880 you can be assured that it was moved here from the Channing Cemetery. Even though Bluff City was opened in 1880, internments continued at Channing until the final burial took place there in 1906.

Bluff City Cemetery consists of 107.8 acres of land. Albert Marckhoff, one of the five Marckhoff brothers, was the only one not to follow in the family tradition of brick- or stonemason. Albert was the first sextant, or supervisor, of the cemetery, and laid out the first 12 sections.



## CAST

---

1. Edward Szula — August Conte
2. Vignette, Dr. Benjamin P. Browne —  
Jim Anderson and Andrew Ross
3. Mary Stewart — Linda Rock
4. Vignette, Common Grave Area —  
Sara Ellen Anderson and Emma Marston
5. Polly Rutland — Tracie Ellis
6. Levi Tennant — Rick Ellis
7. Vignette, George M. Peck/Windmill — George Rowe
8. Louis Blum — Bill Briska
9. Annie Tallent — Bonnie Conte



## LIST OF GUIDES FOR 2013 CEMETERY WALK

---

- |                   |                     |                      |
|-------------------|---------------------|----------------------|
| 1. Alisa Corsi    | 8. John Marston     | 15. Doug Tomsha      |
| 2. Barb DeMoulin  | 9. Monta Nelson     | 16. Hannah Walters   |
| 3. Jana Frohlich  | 10. Leslie Robinson | 17. Eileen Zywickiel |
| 4. Andrew Cuming  | 11. Marge Rowe      |                      |
| 5. Tricia Grosser | 12. Sara Russell    |                      |
| 6. Pam Huske      | 13. Barbara Schloss |                      |
| 7. Paul Larson    | 14. Pam Thompson    |                      |



# CEMETERY WALK COMMITTEE 2013

---

Laura & Steve Stroud — Co-Chairs

David Siegenthaler — Research

Anne LoCascio — Graphic Design

Elizabeth Marston — Sponsorships & Media

John Fleener — Videographer

Marge Rowe, Laura & Steve Stroud — Route Planners

George Rowe — Chair set-up and Removal



## PAST CHAIRPERSONS

---

Jerry Turnquist — 1988-1993

Rebecca Minetti — 1994-2000

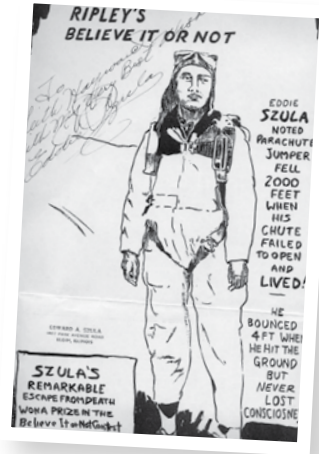
Linda Rock & Marge Rowe — 2001-2007

Laura & Steve Stroud — 2008- Present

# EDWARD SZULA 1914-1970

PORTRAYED BY AUGUST CONTE

One of two Ripley's Believe It Or Not personalities from Elgin, Edward Szula stepped from an airplane in 1938 with the intent of falling gently to the ground with the assistance of his parachute. Unfortunately, it didn't fully deploy and his descent was a little faster than he had planned. He survived this plunge and lived until 1970.



# MARY ELIZABETH STEWART (NEE SMITH) 1846-1934

PORTRAYED BY LINDA ROCK

Mary Elizabeth, who was known as "Lib", was a beautiful red-haired woman in the Smith family home. Her father, Phineas, left the family farm to explore the gold fields of California in 1848. He returned without success, bought a dairy farm and successfully shipped the milk from his farm to Chicago, the first Elgin farmer to do so. This set the pace for Lib's life and she continued to find success in life as well.

## **POLLY RUTLAND 1798-1888**

**PORTRAYED BY TRACI ELLIS**

Polly was born into slavery in North Carolina. In 1862 she arrived in Elgin on the so-called "contraband train". She was the mother-in-law to Arthur Newsome twice over, since two of her daughters at different times were his wives. Polly was a pillar of her community and was one of the founding members of the Second Baptist Church. She lived to the age of 90 and died in Elgin in 1888.

## **LEVI TENNANT 1847-1883**

**PORTRAYED RICK ELLIS**

Levi was born into slavery in Alabama. He joined the Union forces in Decatur, Alabama on March 31<sup>st</sup> 1864 in the 106<sup>th</sup> United States Colored Troops. He served in a garrison unit until the end of the civil war. He came to Elgin after the war and died of pneumonia at the age of 36.



## **LOUIS BLUM** **1872-1941**

**PORTRAYED BY BILL BRISKA**

Louis was the owner and proprietor of an Elgin institution – “Blum’s ice cream and homemade Candies”. This ice cream parlor was located on Douglas Avenue for many years and it was a popular place for children and adults.



## **ANNIE TALLENT** **1827-1901**

**PORTRAYED BY  
BONNIE CONTE**

Annie was born in New York, one of eleven children. Her father was active in the Scotch church, which later was affiliated with the Presbyterian Church. In 1874 she traveled with her husband to the Black Hills in the Dakota Territories, becoming the first white female to enter this area. Gold had been reported to have been discovered there and a group of men set out to try their hand at discovering it. The area was declared off-limits to any settlers by a treaty with the Native Americans and the group was sent home.





---

VIGNETTE ONE

## **DR. BENJAMIN BROWNE**

JIM ANDERSON AND  
ANDREW ROSS

Founder of and first president of  
Judson College.



---

VIGNETTE TWO

## **COMMON GRAVE AREA**

SARA ELLEN ANDERSON AND EMMA MARSTON

Final resting place of several people removed  
when Channing School was built.

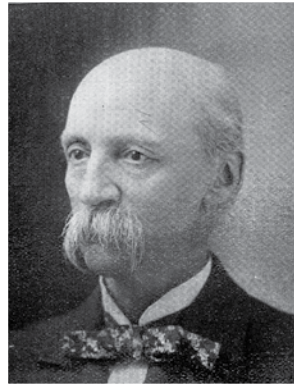
---

VIGNETTE THREE

## **GEORGE M. PECK**

GEORGE ROWE

Early Elgin merchant and president of  
Elgin Wind, Power and Pump Company.



# 26TH ANNUAL CEMETERY WALK SEPTEMBER 22, 2013

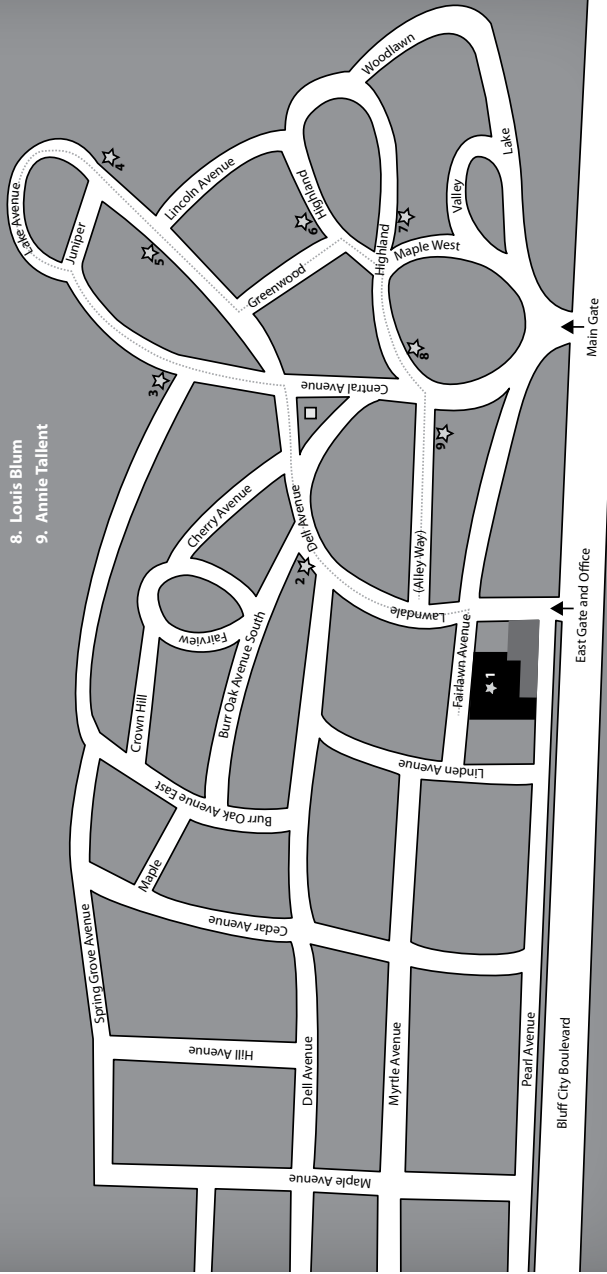
## MAP KEY

WALKING ROUTE .....

CHARACTER LOCATION ☆

REST AREA □

1. Edward Szula
2. Vignette, Dr. Benjamin P. Browne
3. Mary Stewart
4. Vignette, Common Grave Area
5. Polly Rutland
6. Levi Tennant
7. Vignette, George M. Peck/Windmill
8. Louis Blum
9. Annie Tallent





**ELGIN DURING  
THE VIETNAM WAR**

TUESDAY, OCTOBER 1, 2013

7 p.m.

**Gail Borden Public Library, 270 N. Grove,  
Elgin, IL**

Elgin historian Jerry Turnquist recalls Elgin during the Vietnam War as told through the newspapers of the time. Images from the Courier News Collection will illustrate Elgin during the 1960s.

**THANKSGIVING: THE GREAT  
AMERICAN HOLIDAY**

SUNDAY, OCTOBER 13, 2013

2 p.m.

**Elgin History Museum**



Nine out of ten Americans eat turkey on Thanksgiving, and most do so around a family table. Food and tradition are the heart and soul of this most-loved, most-observed holiday. Thanksgiving has become the origin myth of America and the expres-

sion of deeply held American cultural ideals. As it considers the evolution of Thanksgiving, from the "First Thanksgiving" in 1621 to the present day, this program invites the audience to think about what this holiday and its food traditions mean for American culture and identity.

**THE LINCOLN FUNERAL TRAIN  
FROM HISTORY TO TODAY**

WEDNESDAY, OCTOBER 30, 2013

7 p.m.

**Gail Borden Public Library,  
270 N. Grove Ave., Elgin, IL**

Bill Werst will give the audience some perspective on the impact not only of the funeral train, but how Lincoln impacted our country even in death. Please register.

This is the info for the Benefit poster, flyer and invitation that you have done for the Museum the past few years. Did I tell you how much you help? And what a difference your help makes?! It's an enormous impact!!



**CIVIL WAR STEAMBOATIN'  
WITH BRIAN "FOX" ELLIS**

ELGIN HISTORY MUSEUM BENEFIT  
SATURDAY, NOVEMBER 9, 2013

6 p.m.

**Elgin History Museum**



Captain Henry Detweiler on 'The Role of Steamboatin' in the Union Victory!'

Based on the pilot's logs of Captain Detweiler, Brian "Fox" Ellis steps on stage immersing the audience in the vital, though unsung role of steamboats in the siege of Vicksburg, the capture of Natchez, and the horrors of Shiloh. Captain Henry Detweiler was there and shares an eyewitness account. He delivered troops and supplies during the Civil War, was a friend of Lincoln and rival of Mark Twain! Fox brings these stories to life in a first person monologue that shares a unique voice in this important chapter of river history. Fox is also the Riverlorian for the Spirit of Peoria.



# THANKS TO

---

Elizabeth Marston — Director, Elgin History Museum

Rick Ellis — Supervisor, Bluff City Cemetery

Kathy Zark — Office Manager, Bluff City Cemetery

Bluff City Cemetery Staff

First United Methodist Church — Loan of chairs

David Siegenthaler & Steve Stroud — Research

Laura Stroud — Guide coordinator

Marge Rowe, Laura & Steve Stroud — Route coordinators

Steve Stroud & Al Walters — Group coordinators

Anne LoCascio — Graphic Design

George Rowe, John Wiedmeyer, Al Walters, John Marston, Doug Tomsha & Boy

Scout Troop #2 — Chair set up and removal

Jerry Roller — Parking and traffic control

Judy Brownfield & Barry Danielson — Greeters

Carolyn Roller, Jeri Barnhart, Mira Wojciechowsha & Andy Walters

— Registration

David & Dolores Nelson — Museum store

Ed Whitcomb, Ron Zywicel, Terry Gabel, Ricky Harris & Kylee Dettmann —

Refreshments & Popcorn Concession.

John Fleener — Videography

Bernice Ferraro & Sue Brown — Fantasy Festival Costume-Magic Centre

Jeff Turner — In The Neighborhood Deli & Café

**SPECIAL THANKS TO ALL THE ACTORS,  
VIGNETTE SPEAKERS AND GUIDES**



# DEBATE SUFFRAGE 6 HOURS BEFORE VOTING IN HOUSE

*Reprinted from The Elgin Daily Chronicle • January 12, 1915*

**Hope of Women Working for Cause Realized When Mondell Amendment  
to Constitution is Considered.**

**Two Hundred Members are Anxious to Talk**

**Little Opportunity Will be Given Many For Presenting Their View  
or Explaining Vote.**

Washington, Jan. 12 — a vote of 209 to 81 to House this afternoon adopted the rule providing six hours' debate on the Mondell woman suffrage resolution. At the request of Majority Leader Underwood there was no roll call.

Adoption of the rule permitting debate on the suffrage resolution was not considered an indication of the strength of either side, leaders pointed out. They declared the large vote in favor of it was the direct result of Underwood's efforts to dispose finally of the suffrage question on a record vote.

Washington, Jan. 12 —The hope of every woman suffragist in the United States that the question of their right to vote be considered in congress was realized today. At 11 o'clock the house met to debate the Mondell amendment to the constitution granting women suffrage. Galleries were jammed, mostly with the suffragists, and nearly every member of the house was in his seat when Chairman Henry of the House rules committee presented the rule providing for six hours debate. Unless there is unexpected parliamentary dickering a vote is expected at 7 p.m.

Nearly two hundred members of the House declared their intention early in the day to speak on the amendment and the leaders believed because of this demand that they would have little opportunity to present their views. The time of the debate will be controlled by Representatives Mondell of Wyoming, Taylor of Colorado, and Volstead of Minnesota and Chairman Henry of the rules committee. The first three will support the suffrage cause. Henry, assisted by Representative Webb of North Carolina, will oppose it.

Ralph Helm  
inc.

ralphhelminc.com

Lawn Equipment Center

36W710 Foothill Road, Elgin, IL 60123  
847-695-1616 • FAX 847-695-1617

7402 Teckler Blvd., Crystal Lake, IL 60014  
815-788-1616 • FAX 815-788-1717

Watch for the Fall Fundraiser

FRIENDS of LORDS PARK ZOO



September 29 from 4 to 7 PM at Imago's

Like & follow us on Facebook at  
Lords Park Zoo-Elgin, Illinois



[elgingraniteworks.com](http://elgingraniteworks.com)

**EFS**  
Foundation

1695 Larkin Avenue  
Elgin, Illinois 60123  
Phone: (847) 289-0513

E-mail us at: [efsfoundation@efsfoundation.org](mailto:efsfoundation@efsfoundation.org)



## BLUFF SPRING FEN NATURE PRESERVE

---

Bluff Spring Fen is an Illinois Nature Preserve. It is nearly 100 acres in size, with Poplar Creek forming its west boundary. Its rolling terrain includes six distinct plant communities; savanna, medic prairie, dry hill prairie, sedge meadow, marsh and the wetland fens for which it gets its name. Each community has its own set of plants and its own beauty.

There are 15 endangered species there, and many other rare and threatened species. Almost 100 different bird species visit the site each year, with over 35 of them staying to nest on the site. More than 55 different butterflies and over 20 dragonflies and damselflies have been counted. Frogs, turtles, snakes and salamanders live in the fen as well. Deer, raccoons, woodchucks, mice, voles, squirrels, and other mammals live there too, although the increase in the coyote population in the area has thinned out the woodchucks quite a bit.

A walking trail runs through the main part of the preserve and is open to the public every day of the year.

*Friends of the Bluff Spring Fen*



## *Laird Funeral Home P. C.*

**“Family Owned and Operated”**

310 S. State Street, Elgin, Illinois 60123 (847) 741-8800

120 S. Third Street, West Dundee, Illinois 60118 (847) 836-8770

-- [www.lairdfamilyfuneralservices.com](http://www.lairdfamilyfuneralservices.com) --

Donald Laird   Stephen Laird   Robert Laird   Patricia Laird  
Corey Short

## *Wait Ross Allanson*

*Funeral and Cremation Services,  
Inc.*

## Servicios de Cremacion y Funeraria

51 Center Street, Elgin, Illinois 60120 (847) 742-2100

201 South Main Street, Algonquin, Illinois 60102 (847) 658-4232

**JEFF TURNER**  
OWNER

**IN THE  
NEIGHBORHOOD**

*Deli & Cafe*

**185 NORTH EDISON AVE.  
ELGIN, ILLINOIS 60123**

PHONE: 847-888-WITN (9486)  
FAX: 847-468-WITN (9486)  
CELL: 847-239-0717

[WWW.ITNDELI.COM](http://WWW.ITNDELI.COM)  
[JEFF@ITNDELI.COM](mailto:JEFF@ITNDELI.COM)

**Dennis Roxworthy**

**ROXWORTHY**

*enterprises*

**(847) 622-8534**

**Chad Roxworthy Painting  
(847) 544-1164**



**Restoring  
the PAST...**

**Preserving  
the CHARM**

[Roxworthy@SBCglobal.net](mailto:Roxworthy@SBCglobal.net)

364 DIVISION

ROMANESQUE  
REVIVAL  
BUILT 1887



Serving the Fox Valley since 1940  
**O'CONNOR-LEETZ**  
**FUNERAL HOME**

Providing families of all faiths with full service planning,  
traditional services & cremation.

364 Division St., Elgin  
(847) 741-1400  
Located in the Historic District

ELGIN HISTORY MUSEUM BENEFIT

# Civil War Steamboatin' With Brian "Fox" Ellis

SATURDAY, NOVEMBER 9, 2013



Based on the pilot's logs of Captain Detweiller, Brian "Fox" Ellis steps on stage immersing the audience in the vital, though unsung role of steamboats in the siege of Vicksburg, the capture of Natchez, and the horrors of Shiloh. Captain Henry Detweiller was there and shares an eyewitness account. He delivered troops and supplies during the Civil War, was a friend of Lincoln and rival of Mark Twain! Fox brings these stories to life in a first person monologue that shares a unique voice in this important chapter of river history. Fox is also the Riverlorian for the Spirit of Peoria.

6 P.M. ELGIN HISTORY MUSEUM

PRESENTED BY THE ELGIN AREA  
HISTORICAL SOCIETY



360 Park Street • Elgin, Illinois 60120  
Phone: 847.742.4248 • Fax: 847.931.6199  
Email: [elginhistory@foxvalley](mailto:elginhistory@foxvalley) • [www.elginhistory.org](http://www.elginhistory.org)

PROGRAM DESIGN BY LoCascio Design

[WWW.LOCASCIODESIGN.COM](http://WWW.LOCASCIODESIGN.COM)