



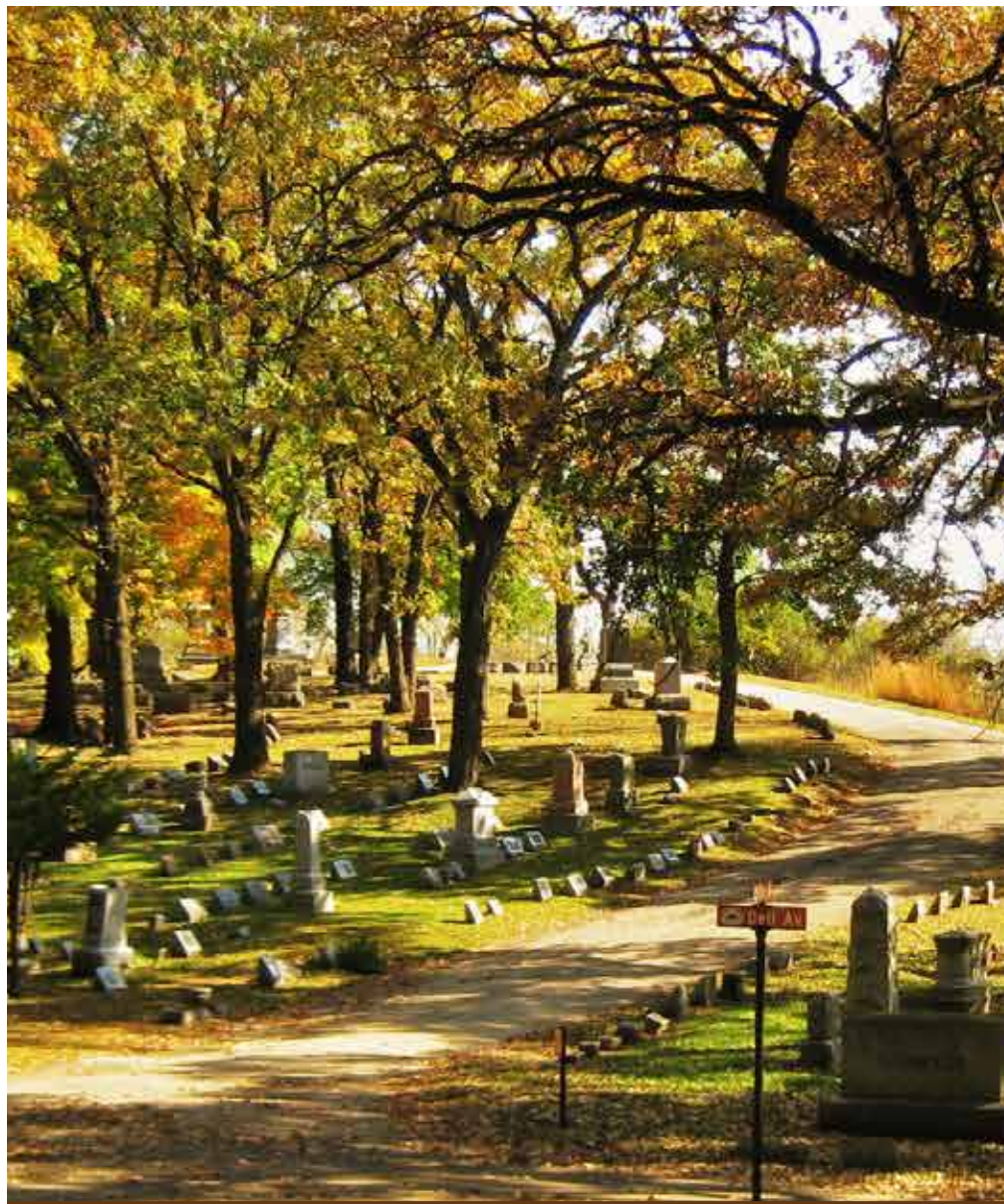
29TH ANNUAL
CEMETERY WALK
AT BLUFF CITY CEMETERY

945 Bluff City Blvd. • Elgin, Illinois

SUNDAY, SEPTEMBER 25, 2016
11:00 A.M. – 3:00 P.M.

PRODUCED BY
ELGIN HISTORY MUSEUM

360 Park Street • Elgin, Illinois 60120 | Phone: 847.742.4248 • Fax: 847.931.6199
Email: elginhistorymuseum@elginhistory.org • www.elginhistory.org



Welcome to the 29th Annual Historic Cemetery Walk



Steve and Laura Stroud, co-chairs of the annual cemetery walk welcome you to the 29th annual cemetery walk. We have an exciting and interesting tour planned for you today. We hope you will enjoy this walk into Elgin's past.

BLUFF CITY CEMETERY ELGIN, ILL.

O'er hill, in dale, by winding path,
Where sacred dead repose;
The natives, erst, in tribal wrath
Crossed here, we may suppose.

We laid our's in the narrow bed,
While tears bedimmed the eyes;
Through words within, then hopeful said,
"Some day they will arise".

"To shine more gloriously bright
Than e'er their portion here,"
Triumphant faith from realms of light,
Bejewelled then, each tear.

In earth's capacious bosom lie,
In rest of heaven's design,
Till with innumerable on high
Complete, in All-divine.

—John Park Brown

Dennis Roxworthy

ROXWORTHY

enterprises

(847) 622-8534

**Chad Roxworthy Painting
(847) 544-1164**



**Restoring
the PAST...**

**Preserving
the CHARM**

Roxworthy@SBCglobal.net

CAST

Lucile Burns—Anne LoCascio

General William Lynch—James Zingales

Joseph Pabst—August Conte

H. Walter Pixley—Andrew Cuming

Vignette, History of Bluff City Cemetery—Jim Turner,

Students from Elgin High School

Vignette, Epitaphs on Monuments—Ira Marcus, Cesar Mendez,

Arnold Nevarez, Sarah Turner

C. Irene Oberg—Babette Colburn

Vignette, Angel Monuments—Jackie Marcus, Bianca Delapena,

Marielena Nunez, Caroline Kaczmarek, Brian Montano

Vignette, Pioneer Mary Jane Gifford—Barbara Schloss,

Sue Moylan

GUIDES FOR 2016 CEMETERY WALK

Beth Hudson

John Marston

Andy Walters

Pam Huske

Andrew Ross

Hannah Walters

Paul Larson

Sanita Saengvilay

Kathy Walters

Sandi McClure

Doug Tomsha

Al Walters

ELGIN PUBLIC HIGH SCHOOL GUIDE ASSISTANTS

Chelsea Armenta, Pedro Cortez, Maria Morales, Ben Pinsel,

Jailene Ramirez, Joseph Villalobos

CEMETERY WALK COMMITTEE 2016

Laura & Steve Stroud—Co-Chairs

Anne LoCascio—Graphic Design

Elizabeth Marston—Sponsorships

Hannah Walters—Media

John Fleener—Videographer

George Rowe, John Wiedmeyer, Mark Preradovic, Al Walters,

Andy Walters—Chair set-up and Removal



IN MEMORY OF
BARBARA DEMOULIN

A DEDICATED GUIDE AND
SUPPORTER OF THE CEMETERY WALK

LUCILLE BURNS 1905 – 1992

PORTRAYED BY ANNE LOCASCIO

She participated in the local beauty pageant in 1925 and was crowned “Miss Elgin 1925”. She later competed in the national competition.



COLONEL WILLIAM LYNCH 1839 - 1876

PORTRAYED BY JAMES ZINGALES

He was born in Elgin and was fascinated with military uniforms. He joined the military against his father's wishes, fought in the Civil War and was taken prisoner and held at the infamous Libby Prison. President Grant was a friend of Lynch and visited him in Elgin, the only seated president to come to Elgin.



JOSEPH PABST

1830 - 1913



PORTRAYED BY AUGUST CONTE

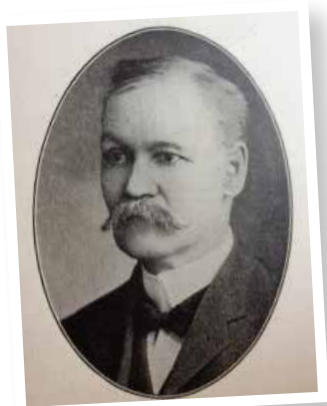
Joseph Pabst was born in Germany and came to Elgin in the 1850s. He opened the first hotel in Elgin, catering primarily to local farmers who came to town with their products to sell. When the hotel burned to the ground, he retired.

H. WALTER PIXLEY

1848 - 1918

PORTRAYED BY ANDREW CUMING

The H. stands for Henry. Pixley was born in a log cabin in Michigan and came to Elgin to learn the art of watch making. He became an expert in the jewel department and was made head of that department.



C. IRENE OBERG

1869 - 1962

PORTRAYED BY BABETTE COLBURN

The C. stands for Christine but she always went by the name Irene. She was a pioneer in the nursing field and was involved with Sherman Hospital practically from the beginning. She was superintendent of the hospital and established the first nurses' training program there.



JAMES DANGERFIELD 1876 - 1941

PORTRAYED BY MICHAEL DELEHOY

James Dangerfield was born in Elgin and served as a Lieutenant in World War I. After the war, he remained in Europe to help with post-war relief. He was highly honored for his work by numerous European nations. When he died in Lisbon Portugal, he was given a magnificent sealed coffin to transport him back to Elgin.



EMILY LORD 1814 - 1904

PORTRAYED BY LINDA ROCK

Emily was not related to the Lord family already in Elgin. She was born in Connecticut and came to Elgin in the 1850s. She and her sister opened a Girls' Seminary (a school to train girls in all things feminine) located on the site where the First Congregational Church is now. Like many other Elginites, she was an abolitionist.

VIGNETTE ONE

HISTORY OF BLUFF CITY CEMETERY

JIM TURNER, STUDENTS FROM ELGIN HIGH SCHOOL

VIGNETTE TWO

EPITAPHS ON MONUMENTS

**IRA MARCUS WITH CESAR MENDEZ, ARNOLD NEVAREZ,
SARAH TURNER**

VIGNETTE THREE

ANGEL MONUMENTS

**JACKIE MARCUS WITH BIANCA DELAPENA, MARIELENA NUNEZ,
CAROLINE KACZMAREK, BRIAN MONTANO**

VIGNETTE FOUR

PIONEER MARY JANE GIFFORD

BARBARA SCHLOSS, SUE MOYLAN



HONORING AUGUT CONTE
FOR 25 YEARS OF
PARTICIPATION IN THE BLUF
CITY CEMETERY WALK.

THANK YOU
AUGIE!

SAVE THIS DATE

November 5, 2016 @ 6:00 p.m.

Annual Benefit and Silent Auction
Elgin Country Club 2575 Weld Road., Elgin IL

Join us as Leslie Goddard portrays
First Lady Jackie Kennedy in 1964

Hearty appetizers and desserts plus a full
silent auction and raffle complete this
wonderful event.

Members \$40.00 per person
Non-Members \$50.00 per person



ELGIN
HISTORY
MUSEUM

Phone: 847-742-4248 or visit our
web site at www.elginhistory.org

THANKS TO

Elizabeth Marston—Director, Elgin History Museum
Rick Ellis—Supervisor, Bluff City Cemetery
Kathy Zark—Office Manager, Bluff City Cemetery
Bluff City Cemetery Staff
First United Methodist Church—Loan of Chairs
David Siegenthaler—Research
Barbara Schloss & Mike Delehoy—Creating the survey
Anne LoCascio—Graphic Design
Hannah Walters—Media
John Fleener—Videography
George Rowe, John Wiedmeyer, Mark Preradovic, Al Walters,
Andy Walters—Chair set-up and removal
Randy Reopelle, Parks and Recreation Director—Loan of Bus
Jim Chevelier—Bus Driver
Judy Brownfield, Councilwoman Carol Rausenburger,
Jim & Sara Ellen Anderson—Greeters
Ricky Harris, Mira Wojeciechowska, Alisa Corsi, Beth Nawara,
Miriam Lytle—Registration/Tickets
Carl Flaks—Survey Table
David & Dolores Nelson—Museum Store
Jeri Barnhart, Holly Wiedmeyer—Refreshments & Popcorn Concession
Aubrey Neville—Golf Carts
Sandi Haggard, Dee Korby—THE SHOP, Costume Rental
Klein's Farm & Garden Market
Jeff Turner—In The Neighborhood Deli & Cafe, Elgin, Illinois
Jeff Morello.....Music
Judy Van Dusen—Still Photography
Elgin High School Students—chair set up and take down
Ruben Tapia Valdes (Elgin High School Student)—Greeter
Barry Danielson—Pedestrian Traffic

**SPECIAL THANK YOU TO ALL THE ACTORS,
VIGNETTE SPEAKERS AND GUIDES**

CEMETERY WALK SPONSORS

EVENT

Quality Painting and Carpentry

BENEFACTOR

Dan & Karen Fox

Roxworthy Enterprises

Symonds - Madison Funeral Home

Wait Ross Allanson/Laird Funeral Home

City of Elgin

O'Connor-Leetz Funeral Home

SPONSOR

Elgin Granite Works/St. Charles Memorial Works

EFS Foundation

DONOR

RAM Remodeling & Home Improvements

Friends of Lords Park Zoo

CONTRIBUTOR

Ralph Helm, Inc

Elgin Public House

THANKS TO ALL OF THE CEMETERY WALK SPONSORS!

EFS Foundation

1695 Larkin Avenue
Elgin, Illinois 60123
Phone: (847) 289-0513

E-mail us at: efsfoundation@efsfoundation.org



BLUFF SPRING FEN NATURE PRESERVE

Bluff Spring Fen is an Illinois Nature Preserve. It is nearly 100 acres in size, with Poplar Creek forming its west boundary. Its rolling terrain includes six distinct plant communities; savanna, medic prairie, dry hill prairie, sedge meadow, marsh and the wetland fens for which it gets its name. Each community has its own set of plants and its own beauty.

There are 15 endangered species there, and many other rare and threatened species. Almost 100 different bird species visit the site each year, with over 35 of them staying to nest on the site. More than 55 different butterflies and over 20 dragonflies and damselflies have been counted. Frogs, turtles, snakes and salamanders live in the fen as well. Deer, raccoons, woodchucks, mice, voles, squirrels, and other mammals live there too, although the increase in the coyote population in the area has thinned out the woodchucks quite a bit.

A walking trail runs through the main part of the preserve and is open to the public every day of the year.

Friends of the Bluff Spring Fen



elgingraniteworks.com



RESTAURANT & PUB

219 E. Chicago St. Elgin, IL

847-468-8810



Laird Funeral Home P. C.

“Family Owned and Operated”

310 S. State Street, Elgin, Illinois 60123 (847) 741-8800

120 S. Third Street, West Dundee, Illinois 60118 (847) 836-8770

-- www.lairdfamilyfuneralservices.com --

Donald Laird Stephen Laird Robert Laird Patricia Laird
Corey Short

Wait Ross Allanson

*Funeral and Cremation Services,
Inc.*

Servicios deCremacion y Funeraria

51 Center Street, Elgin, Illinois 60120 (847) 742-2100

201 South Main Street, Algonquin, Illinois 60102 (847) 658-4232



RAM

Remodeling & Home Improvements

630-441-8862

159 HILL AVE
ELGIN, IL 60120

www.ramremodelingandhomeimprovements.webs.com

ramremodelinghomeimprovements@gmail.com

HELP THE FRIENDS OF LORDS PARK ZOO



Bring more bison and free educational programs to Lords Park!!

"Friend" us on Facebook Page—Lords Park Zoo -Elgin, Illinois

364 DIVISION

ROMANESQUE
REVIVAL
BUILT 1887



Serving the Fox Valley since 1940
O'CONNOR-LEETZ
FUNERAL HOME

Providing families of all faiths with full service planning,
traditional services & cremation.

364 Division St., Elgin
(847) 741-1400
Located in the Historic District

Symonds - Madison

Funeral Home

305 Park Street Elgin, IL 60120



David Barclay was a Scottish immigrant who became a very successful manufacturer of dairy equipment. In 1874, he was elected to his first of four terms as Elgin mayor. His home, built around 1865, still stands across Dundee Avenue as part of the Symonds - Madison Funeral Home.



David Barclay's Home, circa 1920s



Schmidt Funeral Home, circa 1950s



Symonds - Madison Funeral Home 2015



Dan & Joy Symonds, Owners

Part of the Elgin community for more than 90 years,
our building has changed over time, but not our
commitment to excellence.

Proudly family and veteran owned.

www.SymondsMadisonFuneralHome.com

